

Tenor Saxophone

One Octave Major and Minor Scales

Boltz Bands

Concert C Major (D Major)

Musical staff for Concert C Major (D Major). The key signature has two sharps (F# and C#) and the time signature is 4/4. The scale is written in treble clef, starting on C4 and ending on C5. The notes are: C4, D4, E4, F#4, G4, A4, B4, C5. The scale is played in two directions: ascending and descending. The descending scale is marked with a fermata over the final note.

7 Concert A Minor (B Minor)

Musical staff for Concert A Minor (B Minor). The key signature has two sharps (F# and C#) and the time signature is 4/4. The scale is written in treble clef, starting on A4 and ending on A5. The notes are: A4, B4, C#5, D5, E5, F#5, G5, A5. The scale is played in two directions: ascending and descending. The descending scale is marked with a fermata over the final note.

13 Concert F Major (G Major)

Musical staff for Concert F Major (G Major). The key signature has one sharp (F#) and the time signature is 4/4. The scale is written in treble clef, starting on F4 and ending on F5. The notes are: F4, G4, A4, B4, C5, D5, E5, F5. The scale is played in two directions: ascending and descending. The descending scale is marked with a fermata over the final note.

19 Concert D Minor (E Minor)

Musical staff for Concert D Minor (E Minor). The key signature has one sharp (F#) and the time signature is 4/4. The scale is written in treble clef, starting on D4 and ending on D5. The notes are: D4, E4, F4, G4, A4, B4, C5, D5. The scale is played in two directions: ascending and descending. The descending scale is marked with a fermata over the final note.

25 Concert Bb Major (C Major)

Musical staff for Concert Bb Major (C Major). The key signature has two flats (Bb and Eb) and the time signature is 4/4. The scale is written in treble clef, starting on Bb4 and ending on Bb5. The notes are: Bb4, C5, D5, Eb5, E5, F5, G5, Bb5. The scale is played in two directions: ascending and descending. The descending scale is marked with a fermata over the final note.

31 Concert G Minor (A Minor)

Musical staff for Concert G Minor (A Minor). The key signature has no sharps or flats and the time signature is 4/4. The scale is written in treble clef, starting on G4 and ending on G5. The notes are: G4, A4, B4, C5, D5, E5, F5, G5. The scale is played in two directions: ascending and descending. The descending scale is marked with a fermata over the final note.

37 Concert Eb Major (F Major)

Musical staff for Concert Eb Major (F Major). The key signature has three flats (Bb, Eb, and Ab) and the time signature is 4/4. The scale is written in treble clef, starting on Eb4 and ending on Eb5. The notes are: Eb4, F4, G4, Ab4, Bb4, C5, D5, Eb5. The scale is played in two directions: ascending and descending. The descending scale is marked with a fermata over the final note.

43 Concert C Minor (D Minor)

Musical staff for Concert C Minor (D Minor). The key signature has three flats (Bb, Eb, and Ab) and the time signature is 4/4. The scale is written in treble clef, starting on C4 and ending on C5. The notes are: C4, D4, Eb4, F4, G4, Ab4, Bb4, C5. The scale is played in two directions: ascending and descending. The descending scale is marked with a fermata over the final note.

49 Concert Ab Major (Bb Major)



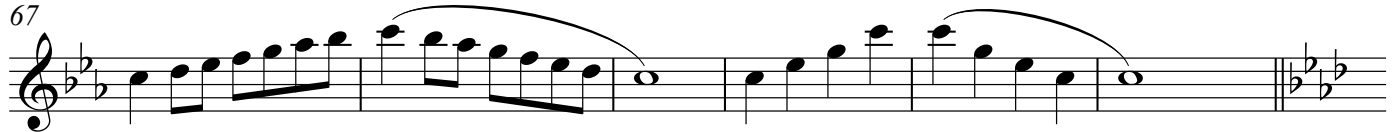
55 Concert F Minor (G Minor)




61 Concert Db Major (Eb Major)




67 Concert Bb Minor (C Minor)



73 Concert Gb Major (Ab Major)



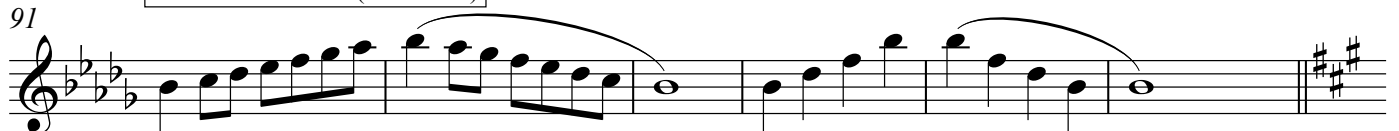
79 Concert Eb Minor (F Minor)



85 Concert Cb Major (Db Major)



91 Concert Ab Minor (Bb Minor)



97 Concert G Major (A Major)

Musical staff for Concert G Major (A Major). The staff is in treble clef with a key signature of three sharps (F#, C#, G#). The melody consists of eighth and quarter notes, with a final half note. A slur covers the first two measures.

103 Concert E Minor (F# Minor)

Musical staff for Concert E Minor (F# Minor). The staff is in treble clef with a key signature of three sharps (F#, C#, G#). The melody consists of eighth and quarter notes, with a final half note. A slur covers the first two measures.

109 Concert D Major (E Major)

Musical staff for Concert D Major (E Major). The staff is in treble clef with a key signature of four sharps (F#, C#, G#, D#). The melody consists of eighth and quarter notes, with a final half note. A slur covers the first two measures.

115 Concert B Minor (C# Minor)

Musical staff for Concert B Minor (C# Minor). The staff is in treble clef with a key signature of four sharps (F#, C#, G#, D#). The melody consists of eighth and quarter notes, with a final half note. A slur covers the first two measures.

121 Concert A Major (B Major)

Musical staff for Concert A Major (B Major). The staff is in treble clef with a key signature of five sharps (F#, C#, G#, D#, A#). The melody consists of eighth and quarter notes, with a final half note. A slur covers the first two measures.

127 Concert F# Minor (G# Minor)

Musical staff for Concert F# Minor (G# Minor). The staff is in treble clef with a key signature of five sharps (F#, C#, G#, D#, A#). The melody consists of eighth and quarter notes, with a final half note. A slur covers the first two measures.

133 Concert E Major (F# Major)

Musical staff for Concert E Major (F# Major). The staff is in treble clef with a key signature of six sharps (F#, C#, G#, D#, A#, E#). The melody consists of eighth and quarter notes, with a final half note. A slur covers the first two measures.

139 Concert C# Minor (D# Minor)

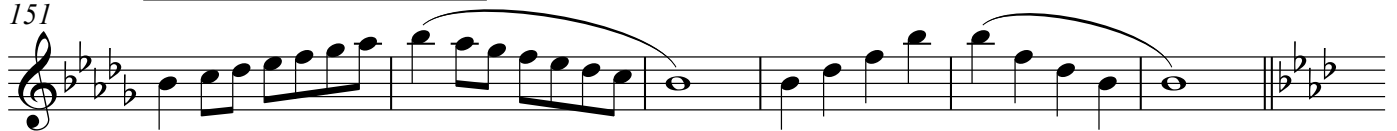
Musical staff for Concert C# Minor (D# Minor). The staff is in treble clef with a key signature of six sharps (F#, C#, G#, D#, A#, E#). The melody consists of eighth and quarter notes, with a final half note. A slur covers the first two measures. The staff ends with a double bar line and a key signature change to two flats (Bb, Eb).

Tenor Saxophone

Concert B Major (Db Major)



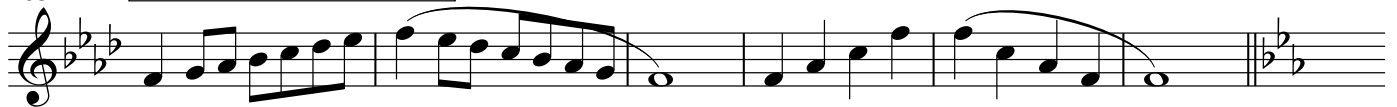
Concert G# Minor (Bb Minor)



Concert F# Major (Ab Major)



Concert D# Minor (F Minor)



Concert C# Major (Eb Major)



Concert A# Minor (C Minor)

